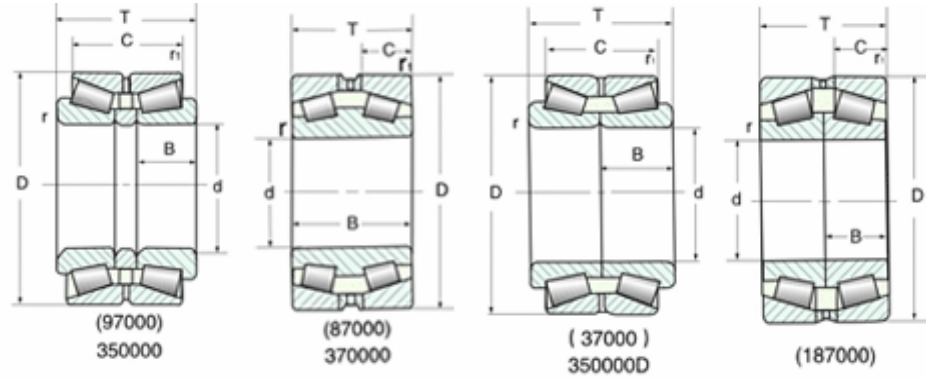




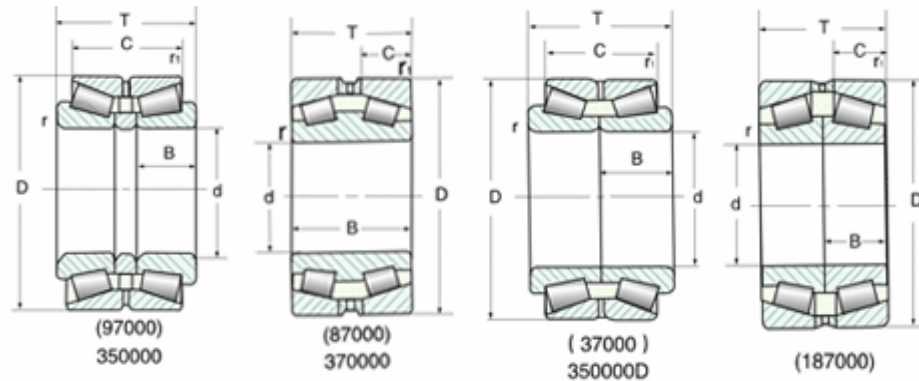
DOUBLE-ROW TAPER ROLLER BEARINGS



www.tldbm-industry.com		The items dont list in the form, can be manufactured according to customers' design											
Basic Bearing NO. (New)	Basic Bearing NO. (Old)	Basic Size							Capacity		Limiting Speed		Weight Kg
		d	D	T	B	C	r _(min)	r _{1(min)}	Cr	Cor	Grease	Oil	
		mm							kN		r/min		
352048X2	2097148	240	360	165	130	72	4	1.1	1303	2832	690	920	52.8
352148	2097748		400	210	163	95	3.7	1.3	1833	3969	630	840	98.1
352952	2097952	260	360	134	108	60	3	0.9	887	2450	670	900	39.9
352952/P6	E 2097952		360	134	108	60	3	0.9	887	2450	670	900	39.9
352952/P5	D 2097952		360	134	108	60	3	0.9	887	2450	670	900	39.9
	37852		400	150	110	75	4.7	1.1	1254	2577	630	840	60.3
352052	2097152		400	186	146	82	5	1.3	1560	3675	630	840	79.3
	37752		430	180	130	90	7.5	2.3	1390	2930	630	840	87.9
	2097752		440	225	180	100	4	2.3	2146	4650	580	770	124
352956	2097956	280	380	134	108	60	3	0.9	916	2597	620	820	44
352956/P6	E 2097956		380	134	108	60	3	0.9	916	2597	620	820	44
352956/P5	D 2097956		380	134	108	60	3	0.9	916	2597	620	820	44
352056	2097156		420	186	146	82	5		1686	3920	580	770	81.5
352060	2097160	300	460	210	165	95	5		1999	4704	560	740	118
	1097760		500	205	152	90	5	1.5	2048	4361	530	710	141
	97764	320	480	151	121	66.5	5	1.5	1667	3480	530	710	88.9
352064	2097164		480	220	186	100	5	1.1	2264	5635	530	710	134
352968	2097968	340	460	160	128	72	4	1.1	1372	3970	500	660	71
	1097768		580	242	170	106	5	1.5	2764	5880	460	620	235
352972	2097972	360	480	160	128	72	4	1	1460	2195	510	680	74.7
	97872		540	169	134	70	6	2	1940	4310	460	620	122
	1097772		600	242	170	106	5	1.5	3040	6660	400	520	221
	1097976	380	520	145	105	65	4	1.1	1480	3720	530	710	78.8
	1097776	380	620	242	170	106	5	1.5	3040	6710	410	540	250
	1097780	400	650	255	180	112	6	2.5	3230	7252	360	480	279
	1097784	420	700	275	200	122	6	2.5	3950	8967	360	480	376
351996	1097996	480	650	180	130	78	5	1.5	1910	5047	360	480	159
	971/500	500	720	236	180	100	6	2.5	3185	7987	360	480	276
	10979/530	530	710	190	136	82	5	1.5	2380	6180	320	420	176
	878/530		730	250	104	250	6	6	4508	13130	320	420	323
	877/570	570	750	240	100	240	6	6	3430	11560	310	410	287



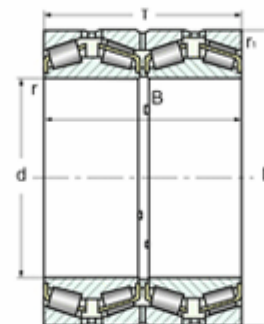
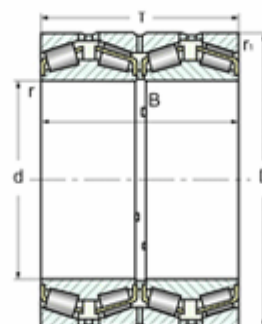
DOUBLE-ROW TAPER ROLLER BEARINGS



www.tldb-industry.com		The items dont list in the form, can be manufactured according to customers' design											
Basic Bearing NO. (New)	Basic Bearing NO. (Old)	Basic Size							Capacity		Limiting Speed		Weight Kg
		d	D	T	B	C	r _(min)	r _{1(min)}	Cr	Cor	Grease	Oil	
		mm							kN		r/min		
	97521	105	190	115	95	50	1	3	615	1150	1600	2100	13.7
	97522	110	200	121	101	53	1	3	615	1150	1500	2000	16.3
	97222E		200	92	74	38	1.2	3					11
352122	2097722	120	180	95	76	42	2	0.6	441	882	1200	1600	9.1
352124	2097724		200	110	90	48	2	0.6	539	1039	1200	1600	12.6
352224	97524	130	215	132	106	58	1	3	700	1390	1200	1600	19.6
352024X2	TD0/D331181		180	86	68	38	0.8	2.5	438	850	1200	1600	7.26
	97526E	140	230	145	117.5	64	1	4	890	1760	1200	1600	25.1
	97526EK		230	149	120	64	0.8	4	890	1760	1200	1600	27.4
352026	2097126	150	200	95	75	42	0.7	2.5			1200	1600	9.72
352126	2097726		210	110	90	48	2	0.6	539	1049	1200	1600	13.9
32028X2	2097128	160	210	95	75	42	2.5	0.6	446	931	1200	1600	8.36
352128	2097728		225	115	90	50	2.5	1	568	1156	1200	1600	15.5
	187328	170	300	154	47	70	1.3	4	1077	1805	900	1300	50.3
	2057930		210	80	62	36	2.5	0.7	343	780	1200	1600	9.12
352930	2097930	180	210	80	62	36	2.5	0.7	343	780	1200	1600	9.32
352130	2097730		250	138	112	60	2.5	1	769	1529	1100	1500	25.8
352932	2097932	190	220	82	65	36	2.5	0.7	367	843	1100	1500	8.15
352032X2	2097132		240	115	90	48	3	0.9	666	1303	1000	1400	16.5
	2097732	200	270	150	120	70	2.5	1	862	1686	1000	1400	28.3
	97532		290	180	140	80	3	1.1	1176	2372	920	1200	46.2
352934	2097934	210	230	82	65	36	2.5	0.7	372	872	1000	1400	8.11
	87834		230	65	27	65	0.7	2	402	926	1000	1400	6.79
352034	2097134	220	260	120	95	54	3	0.9	671	1519	950	1300	20.4
	2057134		260	120	95	54	3	0.9	671	1519	950	1300	20
352134	2097734	230	280	150	120	66	2.5	1	955	1960	950	1300	35.6
352936X2	2097936		250	95	74	42	2.5	0.7	410	1039	950	1300	13
352036	2097136	240	280	134	108	60	3	0.9	838	1774	950	1300	28.5
CR1-3618C3			340	180	140	83	1.5	5	1550	2860	950	1300	71.9
	37736	250	285	108	79.4	54	2.5	2.3	652	1166	950	1300	23.2
	97736		340	180	140	83	1.1	5			950	1300	70.25
352136	2097736	260	300	164	134	72	3	1	1068	2303	890	1200	39.9
352938X2	2097938		260	95	75	42	2.5	0.7	539	1420	950	1300	13.3
352038	2097138	270	290	134	104	60	3	0.9	828	1823	890	1200	28.8
352138	2097738		320	170	130	76	3	1	1176	2352	840	1100	52
352040X2		280	310	151	118	66	1	3	905	2090	900	1200	39
352240	97540		360	218	174	98	1.1	5					
352940	2097940	290	280	110	85	48	3	0.9	598	1500	900	1200	18.1
352140	2097740		340	184	150	82	3	1	1617	3332	800	1100	63.8
352944X2	2097944	300	300	110	88	48	3	0.8	627	1686	800	1100	21.2
352044	2097144		340	165	130	72	4	1.1	1225	2675	760	1000	47.7
352144	2097744	370	195	150	88	4	1.3	1499	3136	760	1000	76.3	



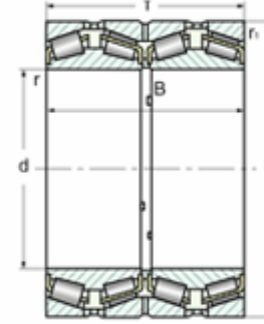
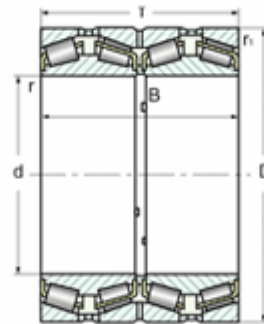
FOUR-ROW TAPER ROLLER BEARINGS



www.tldbm-industry.com		The items dont list in the form, can be manufactured according to customers' design											
Basic Bearing NO. (New)	Basic Bearing NO. (Old)	Basic Size							Capacity		Limiting Speed		Weight Kg
		d	D	T	B	C	r _(min)	r _{1(min)}	Cr	Cor	Grease	Oil	
		mm							kN		r/min		
	77928	139.7	200	157.2	160.3		1.1	1.8	535	1870			16.2
	77730	150	225	136	136		3	2.5	540	1460			17.7
	2077930		210	165	165		0.7	2.3	600	1590			21.2
	2077134	170	260	230	230		3	2.5	940	3100			43
	77736	180	280	180	180		3	2.5	835	2540			39.6
	77740	200	310	200	200		3	2.5	1970	1520			55.6
	2077140		310	275	275		3	2.5	1230	4200			75.1
	77741	205	320	205	205		4	3	1060	2850			55.4
	2077144	220	340	305	305		4	3	2290	5950			99.5
	2077148	240	360	310	310		4	3	3300	2210			90.5
	77750	250	460	270	270		5	4	2205	6270			792
	77750K		460	270	270		5	4	2250	6400			192
	77752	260	400	255	255		3.7	7.5	1480	4950			117
	77752		440	300	300		2	5	2670	5850			182
	77752G		400	255	255		3.7	7.5	1910	4900			117
382952/HC			360	265	265		3	2.5	1730	5050			77.8
382052		400	345	345		5	4	2850	7700			161	
	77756		420	250	250		5	5	1540	5300			119
	77760	300	500	350	350		5	4	267	8720			280
	2077160		460	390	390		5	4	3850	10200			222
	77760U		500	350	350		5	4	2730	8900			280
	77860U		420	310	310		4	3	2020	8100			134
	2077164	320	480	380	380		5	4	3000	11500			252
	2077968	340	460	310	310		4	4	2200	9300			147
381068			520	325	325		5	4	3200	8200			247
	77872	360	480	375	375		4	4	2550	11800			197
381172/HC	1077772		600	420	420		4.7	4.7	3950	13500			388
	77776		550	330	350		5	5	2490	9450			273
381176/HC	1077776	380	620	420	420		5	4	4950	12360			485
	3077776		620	388	388		6	6	3450	11600			443
381176/HC			620	420	420		5	4	5050	12600			485
381176/HCC9			620	420	420		5	4	5050	12600			485
	77779	395	545	268.7	288.7		4	7.5	1760	7050			194
	77779K		545	268.7	288.7		4	7.5	1760	7050			194
	77779U		545	268.7	288.7		4	7.5	1760	7050			194
380680/HC	77180	400	540	400	400		5	5	6350	13300			262
	77880		540	280	280		3.7	7.5	2450	6500			187
381080/HC			600	356	356		5	4	3400	12400			345
380680/HC			540	400	400		5	5	6220	13030			262
381080/HC		600	356	356		5	4	3330	12150			345	
	1077784	420	700	480	480		6	5	5100	18200			749
380684/HC			560	437	437		5	5	7180	16300			298
381184			700	480	480		6	5	9550	11900			755
	77788	440	650	355	355		6*	6*	3350	12100			385
	77888		620	454	454		6	6	6050	18800			385
	77788K		650	355	355		6*	6*	3350	12100			385
	77888U		620	454	454		6	6	6050	18800			432



FOUR-ROW TAPER ROLLER BEARINGS



www.tldb-industry.com		The items dont list in the form, can be manufactured according to customers' design											
Basic Bearing NO. (New)	Basic Bearing NO. (Old)	Basic Size							Capacity		Limiting Speed		Weight Kg
		d	D	T	B	C	r _(min)	r _{1(min)}	Cr	Cor	Grease	Oil	
		mm							kN		r/min		
381992/HC	107792	460	620	310	310		5	4	5490	3450			260
381992/HC	1077992		620	310	310		5	4	5600	3450			260
381992/HCC9	1077992U		620	310	310		5	4	5600	3450			260
	77892U		650	474	474		6	6	4500	20000			506
381192X3/HC			730	440	440		4	7.5	5600	14800			663
381192X3/HCC9			730	440	440		4	7.5	5600	14800			663
381096	77196	480	700	420	420		5	5	4300	16900			582
380698/HC			625	385	385		7	4	4800	16170			278
3810/530		530	780	450	450		6	5	6550	18200			745
	7779/540	540	690	400	400		2	5	5590	11170			375
	779/540		690	400	400		2	5	5700	11400			375
3819/560/HC		560	750	368	368		5	4	7850	15800			447
3811/560			920	620	620		7.5	6	18200	32000			1690
3811/600/HC	10777/600	600	980	650	650		7.5	7.5	9650	37500			1970
3819/600J/HC	10779/600		800	380	380		5	4	4000	18100			497
3810/600/HC	771/600		870	480	480		6	6	6150	25500			992
	779/600		800	365	365		5	5	4000	18100			489
3819/630/HC	10779/630	630	850	418	418		6	6	5000	22100			682
	771/630		920	515	515		7.5	7.5	6550	27500			1190
3811/630/HC			1030	670	670		7.5	6	15000	42000			2200
	777/650C	650	1030	560	560		7.5	12	16000	39300			1770
	777/650		1030	560	560		7.5	12	16000	39300			1720
	777/650K		1030	560	560		7.5	12	16000	39300			1735
	777/650U		1030	560	560		7.5	12	16000	39300			1723
	777/650UY		1030	560	560		7.5	12	16000	39300			1712
3806/660X4/HC		660	855	320	320		12	5.2	4750	17000			495
3819/670/HC	10779/670	670	900	412	412		6	6	5250	24600			773
	779/710	710	900	410	410		3	6	5350	27500			650
3811/750/HC	10777/750	750	1220	840	840		9.5	9.5	16100	68500			3985